

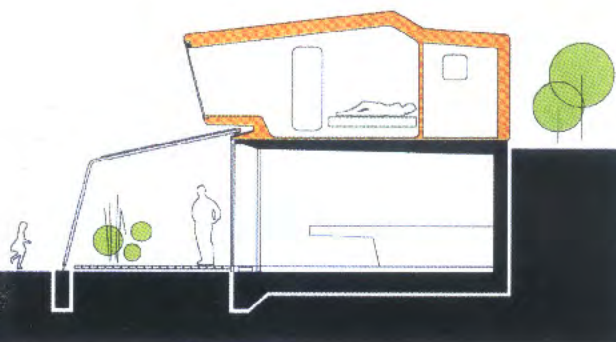
concept III special_sps house // vienna

PROJECT_QUERKRAFT ARCHITEKTEN
PHOTO_HERTHA HURNAUS





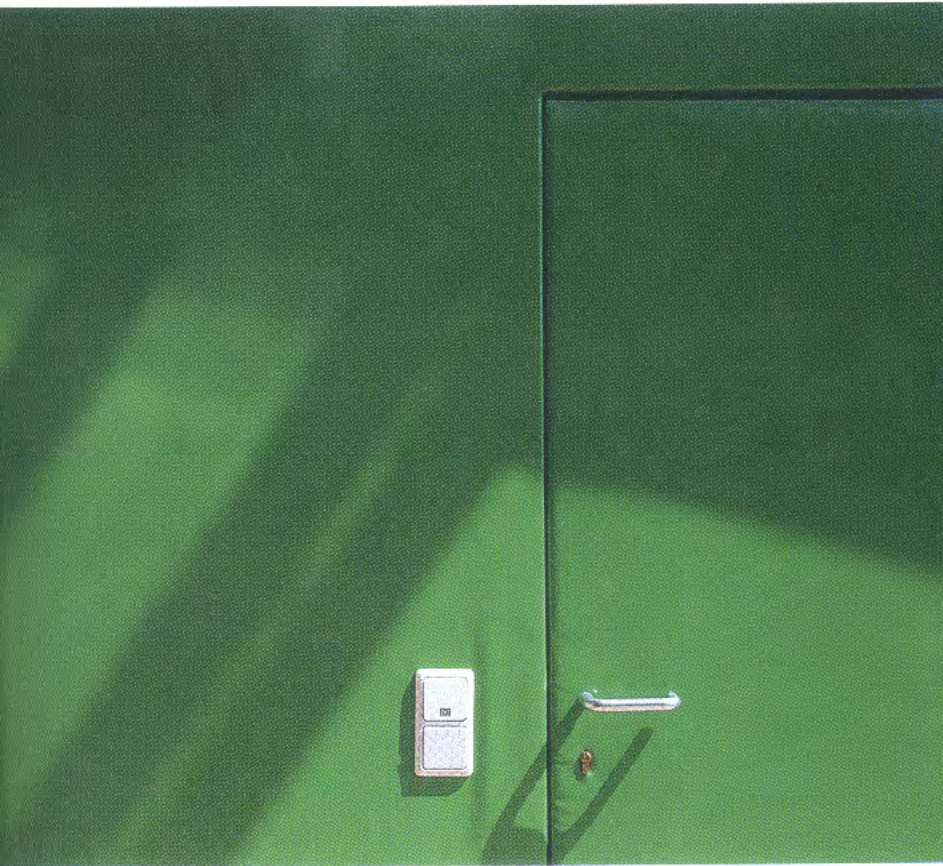
SPS HOUSE THE SPECIAL STRUCTURE OF THIS TWO-STORY FAMILY HOUSE ON THE HILLSIDE GUARANTEES THE OPTIMAL USE OF ITS LOCATION WHILE PRESERVING LANDSCAPE BEAUTIES AND PEACE IN THE NEIGHBORHOOD





SPS HOUSE_SITTING IN ONE OF
THE SECOND FLOOR PODS,
YOU CAN ENJOY THE EXTRAORDINARY
PANORAMIC VIEW OVER VIENNA

Built on the hillside providing a gorgeous panoramic view over the Austrian capital, the dwelling houses a family with kids and a subtenant. The owners have chosen a project by Querkraft, an architecture studio from Vienna. To fit their demands as well as the building code regulations, the architects had to maximise the interior space and allow the family to fully enjoy the garden and the view, considered one of the main attractions of this property, at the same time keeping in mind the neighbours who live higher on the hill and have equal rights to meditate on the landscape beauties.



GH HOUSE . PUSHING THE STRUCTURAL SIMPLICITY TO THE LIMITS, THE ARCHITECTS SMARTLY MANAGED THE RESTRICTED BUDGET PROVIDING THE INHABITANTS WITH MAXIMUM OF LIVING SPACE AND THE OPPORTUNITY TO FEEL TOTALLY FREE ABOUT THE WAYS TO ARRANGE IT